



I ENCONTRO INTERNATO MÉDICO DA ZONA CENTRO

Orientadores de formação e médicos internos



Experience report from a Center integrated in an European Reference Network



Nadia Laezza, Inês Pessanha, José Pedro Lopes, Catarina Cunha, Maria Francelina Lopes

Department of Pediatric Surgery; Pediatric Liver Transplantation Unit. Pediatric Hospital (HP), Centro Hospitalar e Universitário de Coimbra (CHUC). On behalf of ERN TRANSPLANT-CHILD.

Introduction

European Reference Networks (ERN) are virtual networks of healthcare centers in Europe that promote interchange of experience and knowledge through cooperation for clinical discussion of rare or complex cases.

The first twenty-four ERN were created in 2017, involving over 900 highly specialized healthcare units and more than 300 hospitals of 26 countries of the European Union.

Our Center (CHUC) is included in ten ERNs, among them, the **ERN TRANSPLANT-CHILD**, which is related to children transplantation.



Fig. 1: CPMS on-site training in Coimbra 2018, CHUC.

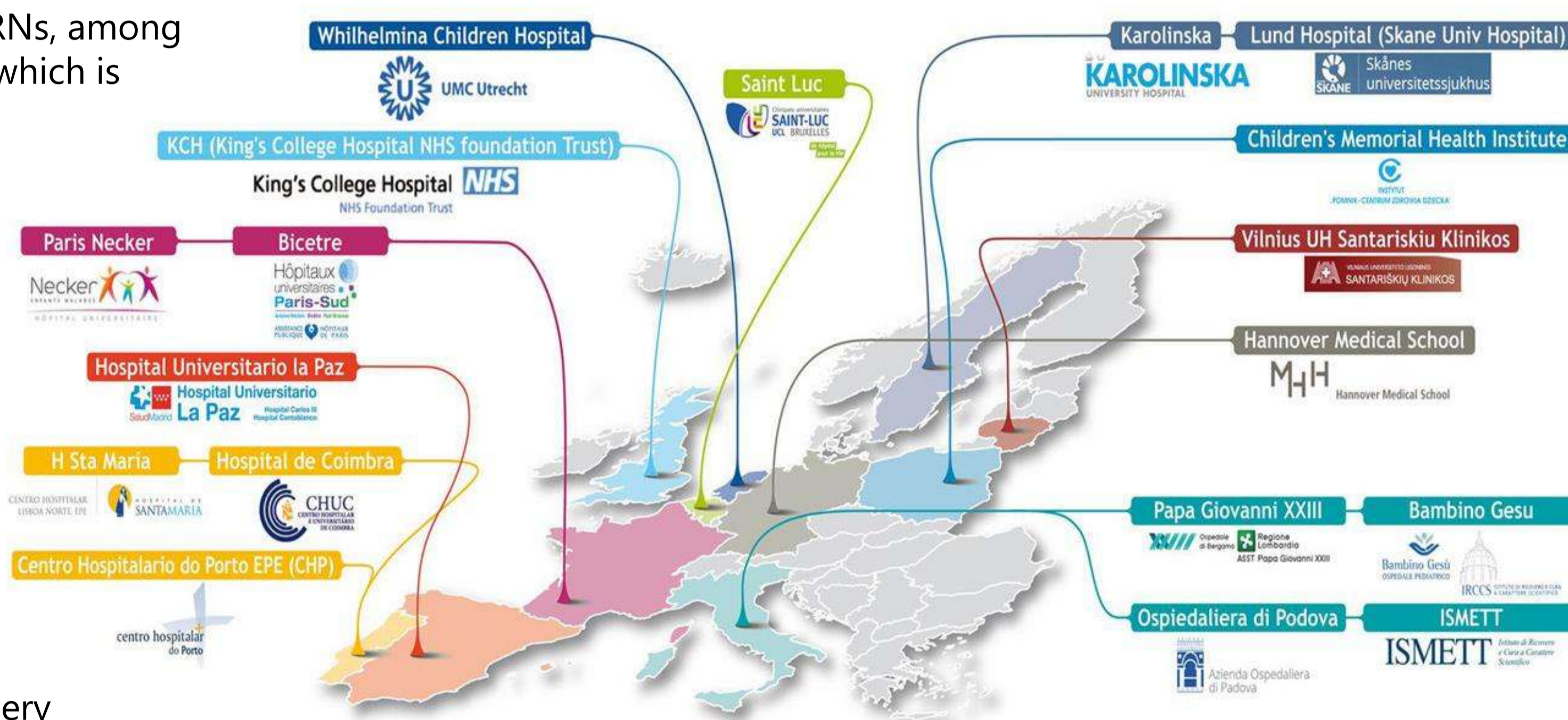


Fig. 2: The 18 European Centers of ERN TRANSPLANT-CHILD, including CHUC.

Goals

Report our experience as Pediatric Surgery Residents working in a Center integrated in the ERN TRANSPLANT-CHILD.

Experience Report

Pediatric Surgery Residents could benefit from an active participation in the ERN TRANSPLANT-CHILD, specifically in the area of Pediatric Liver Transplantation (PLT).

For 25 years we have been the only National Reference Center for PLT. However, when compared to other European countries, our vast experience is restricted by the lower volume of cases.

To be able to submit cases for evaluation and clinical discussion by an Expert Panel of the ERN TRANSPLANT-CHILD, we received training in **Clinical Patient Management System (CPMS)**, and we added case examples.

[CPMS PLATFORM LOGIN](#)

When fully functional, we will have the opportunity to participate in the clinical discussions of complex cases in the area of PLT, which will promote our diagnostic capacity, clinical judgment and overall experience.

Attending clinical discussions by international reference specialists also has a **role modeling** function that is extremely important for the training of the young resident.

Conclusions

The involvement of the young resident in ERN promotes the early creation of international synergies in medical practice, implies multiple advantages in our training and should be stimulated in different Hospitals.

We also participated in the organization and development of **E-Learnings** for the Education and Training Working Group.

The ERN offers **Webinars** for the continuous and updated training of all the healthcare professionals that integrate it.

2018		2019	
September		January	
Date (4pm CET)		Date (4pm CET)	
Sept 06	ERN IT platforms pills	Jan 03	Research funding office pills
Sept 13	Research funding office pills	Jan 10	Healthcare WG meeting
Sept 20	Monthly Transplantchild update	Jan 17	Qa5 WG meeting
Sept 27	E-learning on Clinical Practice Guidelines: Agree methodology training session	Jan 24	E-learning sessions: Module 4
		Jan 31	Monthly Transplantchild update
October		February	
Date (4pm CET)		Date (4pm CET)	
Oct 04	Research WG meeting	Feb 07	CPG WG meeting
Oct 11	Qa5 WG meeting	Feb 14	EaT WG meeting
Oct 18	Monthly Transplantchild update	Feb 21	Monthly Transplantchild update
Oct 25	E-learning sessions: Module 1	Feb 28	E-learning sessions: Module 5
November		March	
Date (4pm CET)		Date (4pm CET)	
Nov 01	ERN IT platforms pills	Mar 07	Research WG meeting
Nov 08	CPG WG meeting	Mar 14	Networking/Knowledge management WG meeting
Nov 15	Healthcare WG meeting	Mar 21	Monthly Transplantchild update
Nov 29	E-learning sessions: Module 2	Mar 28	E-learning sessions: Module 6
December			
Date (4pm CET)			
Dec 06	EaT WG meeting		
Dec 13	Networking/Knowledge management WG meeting		
Dec 20	Monthly Transplantchild update		
Dec 27	E-learning sessions: Module 3		

(...)

The ERNs and the tools they provide add great value for residency training because they allow multi-purpose learning. Additionally, they can create **internship** opportunities in International Reference Centers and participation in **Multicentric Research Projects**.



Transplantation in Children (ERN TRANSPLANT-CHILD)